

## Installation of the FLOATWINE Traditional wine rack WITH template

Ten minutes of explanation will go a long way to making the installation very easy...

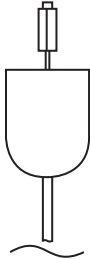
STEP 1

A



STEP 2

B



C



D



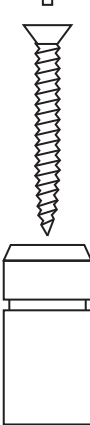
STEP 3

E



STEP 5

F



1. A full size template is included in the box. Lay this out on the floor and ensure that the bottles drawn on the template are facing as you want them.
2. **LEAVE THE TEMPLATE IN PLACE THROUGHOUT THE INSTALLATION AS REFERENCE IS MADE TO FRONT AND BACK** (Neck and Base of Bottle)
3. Tape the template in position with masking tape.
4. Using a laser plumb, or traditional string plumb bob, transfer the dots from the template to the ceiling. Please ensure that this is done accurately as this makes for a neat installation.
5. Once the marks are transferred, the ceiling can be drilled using an 8mm SDS hammer drill or for installation to wood, 3mm pilot holes should be drilled for the 4.8mm screws.
6. Without removing the template from the floor, drill through the marks into the floor using an 8mm SDS hammer drill. If the floor is tiled, it is advisable to use a 10mm core bit through the tile, and to then proceed with the 8mm SDS bit into the screed. This will prevent cracking of the tiles.
7. Install the plastic plugs into the concrete ceiling, and floor holes after carefully blowing out the dust. (Not necessary for wooden ceiling)
8. From now on refer to the included cable installation instructions. (STEP 1 - STEP 6)
9. Install the threaded brass cups to the ceiling, and the silver tubular floor mounts to the floor using the included screws. Make sure that they are tight against ceiling and floor.

**IMPORTANT:** It is essential to check that the top ceiling fixings are strong enough to take the weight of the items being displayed, whilst allowing for the tension in the cables.  
No responsibility will be taken for incorrect fixing. This responsibility rests with the installer.

**STEP 1** Fix fitting A to ceiling:

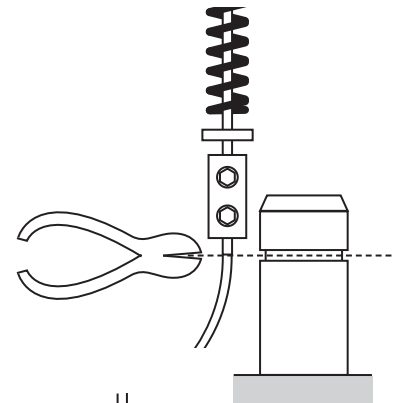
- for wooden ceilings use a wood screw
- for concrete ceilings use a Fisher plug and screw

**STEP 2** Screw fitting B to fitting A.

**STEP 3** Loosen the grub screws in fitting E, using the allen key provided and slide fittings C, D and E up the cable.

**STEP 4** Pull down the cable and cut off in line with the decorative line around fitting F

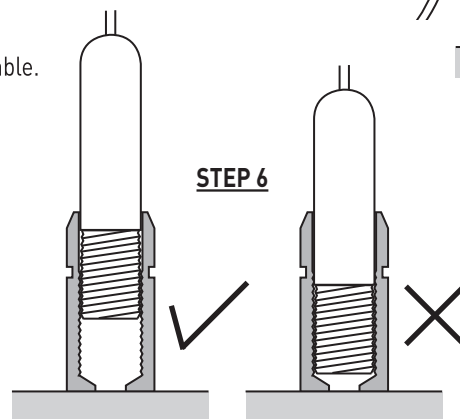
**STEP 4**



**STEP 5** Re-tighten E on the end of the cable.

**STEP 6** Adjust the tension of the cable by screwing C into F.

**STEP 6**



10. The wine racks are in a specific sequence which is referenced on the template, and by markings on the bottom of each section. **IT IS IMPORTANT TO KEEP THESE SECTIONS IN THE CORRECT ORDER** i.e. FRONT /BACK etc. This is to ensure that the bottles remain level.

11. Check also that the grub screws on the small fittings which hold the bottle hangers are all facing in the same direction as you hang each section up to the top brass fittings. It is preferable that the grub screws face away from you!

12. Once all cables are hanging in position, and after double checking by inserting a wine bottle in each section to check that they are level, then proceed as per the included instructions to cut, connect and tension the cables at the bottom.

There is a packet with a few spare grub screws and two small allen keys for installation.